

Overview

Vantage's IMC-USB security key allows *InFusion Media™* client software to run on almost any tablet touchscreen, laptop or desktop computer



running on Windows®. Simply install Vantage's *InFusion Media™* software and this tiny, USB security key and your computer is "unlocked" to the Vantage world. Now adding non-traditional control points is open to most existing hardware. *InFusion Media™* is award winning, patent pending, software that works in conjunction with Vantage's *Design Center™* and *Touchscreen Designer™*. This software makes designing and

programming touchscreens completely flexible. Build simple to complex, yet professional, looking screen designs in as little as five minutes. Simply drop-in powerful, pre-programmed, components, making every touchscreen design easy for anyone. InFusion Media supports seven major drop-in components (widgets) and more are always on the way. These include; 1) *Lighting*, 2) *Music*, 3) *Photo Albums*, 4) *Intranet/Internet IP Cameras*, 5) *Weather*, 6) *Energy Meter* and 7) *Web Site* components. Additional widgets and interactive, dynamic strings may also be customized and included in the screen design.




Requirements and Features

System Requirements:

- Windows XP, Vista or Windows 7*
- 32 bit & 64 bit
- Tablets, Laptops, Desktops
- At least one (free) USB port for the very tiny, IMC-USB security key - 1 needed per device
- Export resolutions 1024x768, 1024x600, 800x600, 640x480
 - Export resolutions must be equal to or less than target devices resolution setting
- *InFusion Media* 2.9.5 or later
- *Vantage Media Server* 2.3.2 or later
- DMM version 1.6a rc5 or later

Features/Benefits:

- Allows Vantage interface on Windows OS devices
- Flexibility to adapt to evolving UI market devices
- USB key has a very low profile
- USB's LED light is off when in operation
- USB key may be moved to new device
 - InFusion Media on old device will start to display DEMO message
- InFusion Media export resolutions 1024x768, 1024x600, 800x600, 640x480
- 2 modes - tablet or pc (show or hide mouse pointer)
 - When mouse is disabled, the mouse disappears inside the InFusion Media window when touching buttons, etc., and reappears when touching any part of screen *outside* of the InFusion Media area
- View or Hide InFusion Media application. Even when minimized the program application is hidden. Only the icon in the Windows notification area remains. 
- Full InFusion Media support - the same support found in Vantage's TPT1210-1 and TPT700-1 touchscreens

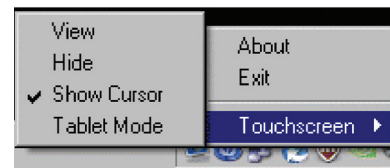
***NOTE:** *InFusion Media* and the *IMC-USB* key constitute the InFusion Media Client software installation. Vantage Controls Inc. *cannot guarantee* that this product will successfully install or perform as expected on every Windows OS device due to variations in systems, anti-virus programs, 3rd party software, power settings, available memory, etc. If software, hardware conflicts and/or memory issues are present, reconciliation of these potential hardware and software issues, is the responsibility of the computer owner and not Vantage Controls Inc. or any of its affiliates.

Installation and Setup

Installation of Vantage products should be performed or supervised by a *Certified Vantage Installer*. InFusion Media software is not on or part of the IMC-USB security key.

Installation Steps

- Install *SetupVantageInFusionMedia-2-9-5.msi*, follow the prompts on the screen.
- Insert the IMC-USB security key - LED light should be on
- Launch InFusion Media from the new installation icon. Security key LED light will go off
- Export custom screen design from Design Center's Touchscreen Designer software
- InFusion Media will automatically re-launch itself after the Design Center export.
- Right click on the Vantage InFusion Media icon in the system tray (right side of tray) to open the selections shown below.



- Select **Show Cursor** for Desk Top and Lap Top computers that don't support "touch".
- Select **Tablet Mode** for tablets and other computers that do support Touch.
- The program may be left running in the background but hidden by selecting **Hide**. Select View again by right clicking on the program icon and selecting **View**.
- Selecting Exit, shuts the program down completely.

InFusion Media Drop-In Widgets

Three software products are necessary for *complete* use of all the drop-in components; *InFusion Media™*, *Design Center™* and *Vantage Media Server™*. Vantage recommends installing the latest updates available for these software packages.

Vantage Media Server 

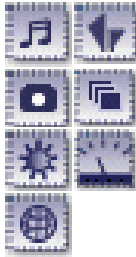
Install *Vantage Media Server* on a computer, used for music, with *Windows Media Player* or *iTunes* running Windows XP, VISTA or Windows 7. Once the *Vantage Media Server* is installed, double click the shortcut on the desk top to launch the server. The server makes the Media computer's digital music and picture libraries available to programmed touchscreens. Vantage Media Server typically detects the digital music library and selects the correct player. However,

by right clicking the Vantage Media Player Icon in the tasks running section of the Window's task bar it is possible to select the correct player from the pop-up menu. This is useful if more than one player and list is loaded on the server computer, however, only one server and source is allowed at the same time on a single computer. (Please see *NOTES*: on next page)

NOTE: Vantage recommends that song Databases accessed by the *Vantage Media Server* be kept under 20,000 songs for best performance.

Streamline Touchscreen Designer Tips

Premiere among InFusion Media and Touchscreen Designer are these seven comprehensive drag-and-drop, program buttons.



Setting Up Widgets In Touchscreen Designer

Music:

1. Open *Touchscreen Designer* and add a child page called Music.
2. On the Music page click the music icon button, *Place Music Component* and then click on the page. This component allows complete Vantage DMM or Windows Media Center / Windows Media Player / iTunes Music Libraries (ripped song lists) to be Queued and played from Touchscreens.
3. Right click anywhere on the newly added Music Component and select *Properties* to setup:
 - a. *Theme*: Select design theme.
 - b. *Text Color*: Black or White.
 - c. *Button Shape*: Capsule or Rectangle.
 - d. *Button Color*: Component's button color.
 - e. *Highlight Color*: Selected button's highlighted color.
 - f. *Size* - Small or Large Music Component within page.
 - g. *Device*: DMM or other (e.g., Window's Media Player or iTunes).
 - h. *IP Address*: The IP address or DMM/computer name of the music source wanted, (e.g., For computers, the IP address or name of the computer running *Vantage Media Server* software).
 - i. *Source*: Only available when DMM is selected.
 - i. Select a Source/Room from 1-4 or higher with stacked DMMs.
 - j. For DMM, Check *Audio Library* and/or *Internet Radio*
 - k. Click *OK* or *Cancel* to exit *Properties*.
4. When downloaded to a touchscreen, music information is sorted by:
 - a. Albums,
 - b. Artists,
 - c. Playlists,
 - d. Genres,
 - e. Songs.
5. Queue songs from any of the 5 lists above.
6. When songs and/or albums are queued by the user, the queue may be saved as a new playlist for future use.
7. Using the Music Component for devices other than the DMM is equally easy to use. A computer with *Windows Media Player*, iTunes, etc. must have the **Vantage Media Server** software (*VantageMediaServer.exe*) installed and running. With the **Vantage Media Server** installed double click the icon on the desk top to launch the server.
8. The XP Media Center computer or Windows Media Player computer, iTunes etc. contain the recorded music (ripped songs) and may be connected to any audio distribution system for playback.
9. Navigation of the Music Component on touchscreens is intuitive. Experiment with the buttons and navigation to quickly become an expert.

Lighting:

1. Open *Touchscreen Designer* and add a child page called Lighting.

2. On the Lighting page click the lighting icon button, *Place Vantage System Control Component* and then click on the page. This component allows all or selected programmed keypad buttons and/or all or selected loads in the InFusion System to be added to the touchscreen.
3. Right click anywhere on the newly added Lighting Component | select *Properties* to setup:
 - a. *Theme*: Select design theme.
 - b. *Text Color*: Black or White.
 - c. *Button Shape*: Capsule or Rectangle.
 - d. *Button Color*: Component's button color.
 - e. *Highlight Color*: Selected button's highlighted color.
 - f. *Size* - Small or Large Lighting Component within page.
 - g. Click *OK* or *Cancel* to exit *Properties*.
4. Again, right click anywhere on the newly added Lighting Component | click on *Select Devices* to setup:
 - a. Select all or any combination of loads.

-OR-

 - b. Select all or any combination of keypads and buttons.
5. Navigation of the Lighting Component is easy and intuitive. Hierarchy is by Floor, Room and Loads/Buttons in each room.

Video Camera:

1. Add a page called Video Cameras.
2. On the Video page click the icon button, *Place Video Camera Component* and then click on the page. This component allows IP/Web based cameras to be added to the touchscreen.
3. Right click anywhere on the newly added Video Camera Component | select *Properties* to setup:
 - a. *IP address*: The IP address of video camera
 - a. *Theme*: Select design theme.
 - b. *Icon Color*: Black or White.
 - c. *Camera Type*: Axis, PanasonicKX, WebCam or WebPoint.
 - d. *Resolution*: 320x240, 640x48 or Custom.
 - e. *Channel*: Enter the Channel number of camera when applicable.
 - f. *Name*: Enter the camera Name (network camera user name).
 - g. *Password*: Enter the camera Password.
 - h. *Tilt/Pan*
 - i. *Zoom*
 - j. Click *OK* or *Cancel* to exit *Properties*.
4. Multiple Video Camera Components may be placed on the same page for larger model touchscreens.
5. Create custom size Video areas by dragging the handles on the camera object inside *Touchscreen Designer*.
6. Position video camera object so Tilt/Pan and Zoom options may appear to the right of the camera on supported cameras.

Pictures:

1. Add a page called Photo Albums.
2. On the Picture Albums page click the icon button, *Place Pictures Component* and then click on the page.
3. Right click anywhere on the newly added Pictures Component | select *Properties* to setup:
 - a. *Theme*: Select design theme.
 - b. *Text Color*: Black or White.
 - c. *Button Shape*: Capsule or Rectangle.
 - d. *Button Color*: Component's button color.
 - e. *Highlight Color*: Selected button's highlighted color.
 - f. *Size* - Small or Large Picture Component within page.
 - g. *IP Address*: Enter the IP address of the computer containing pictures and Vantage Media Server.
 - h. Click *OK* or *Cancel* to exit *Properties*.
4. Set up Photo Albums (folders) in the Windows *My Pictures* directory on the server computer.

Weather:

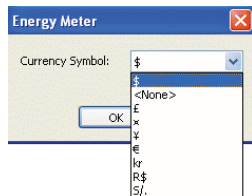
1. On any page that has room for the Weather Component click the icon button, *Place Weather Component* and then click on the page where the weather information will be placed.

2. Right click anywhere on the Weather component and select *Properties* to setup:
 - a. *Location*: Select City & State, City & Country, or U.S. Zip Code.
 - b. *Interface Color*: Black or White.
 - c. *Forecast*: Select from the following:
 - i. 5 Day Forecast
 - ii. 3 Day Forecast
 - iii. Current Conditions
 - iv. Current Conditions - Compact
 - v. Current Conditions - Subcompact
 - d. *Scale*: Fahrenheit or Celsius.
 - e. Click *OK* or *Cancel* to exit *Properties*.

Energy Meter:



1. Add a page called Energy Meter.
2. On the Energy Meter page click the Energy Meter icon button, *Place Energy Meter Component* and then click on the page.
3. Right click anywhere on the newly added Energy Component | select *Properties* to select a Currency Symbol.
4. Again, right click anywhere on the newly added Energy Component | select, *Select Energy Meters...* to assign the Energy Meter to be used. **NOTE:** The Design Center project file must have the AccuEnergy Driver setup in order to assign an Energy Meter to this component.



Web Window:



This component will load a Web Page Window within the InFusion Media page - compare to a picture-in-picture concept.

1. On any page that has room for the Web Component click the icon button, *Place Web Window Component* and then click on the page where the Web Window will be placed.
2. Right click anywhere on the Web Window Component and select *Properties* to setup the URL.
3. Click *Reload on page navigation* for a fresh reload of the page.
4. Custom size the image for personal preference.



Exporting Screen Designs

Make sure the IP address of the InFusion Controller is entered in the Design Center project file before exporting the screen.

- From Design Center's Menu Bar, click on *Settings* | *Project Information* | *Owner Information*.
- Enter the IP address of the InFusion Controller in the *Controller IP Address*: box.
- Click *OK* and save the file.

Exporting Designed screens from Design Center:

- Touchscreens show up automatically when exporting from Touchscreen Designer as long as the touchscreen is on the same network and the InFusion Media software is installed and running.
- *InFusion Media* must be installed and running on the target touchscreen.
- The computer name of the touchscreen may be used when exporting.
- The IP address of the touchscreen may be typed in manually.

NOTES:

The Vantage Media Server or the music server computer must be running Windows's Media Player® version 10 or higher, or iTunes, version 7 or higher and have a library of "ripped" music. The *Vantage Media Server* is embedded in DMM systems. Cover art and other music information is published to touchscreens via the *Vantage Media Server* software. DMM, Windows Media Player or iTunes may have wrong information or low quality Cover Art. This information should be corrected at the source. See the DMM Install Guide for additional information specifically relating to the Vantage DMM.

Once a design is saved in Touchscreen Designer from inside Design Center, the IP address that the screen is being downloaded to is also saved. This is helpful when re-downloading as long as the screens use static IP addresses.

Touch Screen Designer Tips

How to program a button to bring up the URL of my choice on the Web Browser:

- From *Design Center* | *Touchscreen Designer*, place a button on a screen.
- Right click on the button and select "Properties"
- Click on the "Navigation" Tab
- Select "WebBrowser", and type in the complete URL (e.g., <http://www.vantagecontrols.com>).

How to select page transitions used by InFusion Media in the touchscreen:

- From the Design Center, Touchscreen Designer, Click the "Options" menu.
- Select "Miscellaneous"
- Select the Page Transitions desired and click *OK*

Vantage/Legrand, Vantage Controls Inc., Vantage, InFusion Media, Design Center, QLink, RadioLink, C-Box, TheatrePoint, BriteStyle, TPT and other names used by Vantage are trademarks or registered trademarks of Vantage Controls Inc. All other art work, brand and product names are copyrighted, trademarks or registered trademarks of their respective companies.