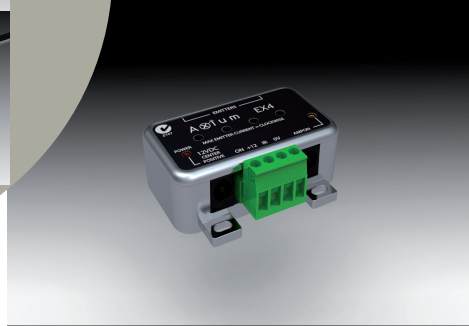
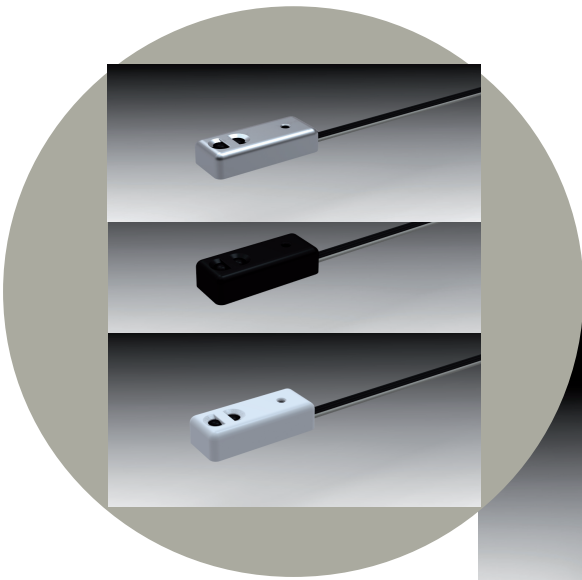




## Axium IRFX-3 Intelligent IR Receiver



Data-Stream Filtered<sup>©</sup> Infra-Red Receiver  
45% smaller than the IRFXII.

The IRFX3 is Plasma, LCD, LED & Sun Light tolerant, utilising leading edge technology to filter the received Infrared (IR) data packets.

A microprocessor filters then re-transmits & re-modulates in real time, with priority to reconstruct Fox IQ/My Sky HD (Pace HD) data.

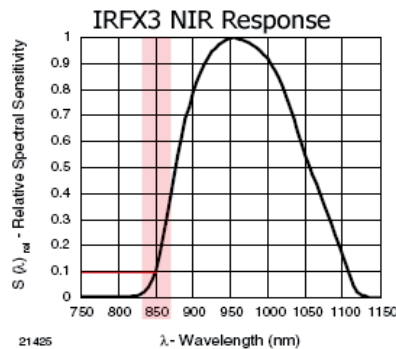
Significant improvement in rejected noise and interference using a dual lens receiver system which incorporates a Hi Q optical filter removing the problematic LCD/Plasma frequencies.

Integrated EMI shield for further compatibility.

The IRFX3 is suitable for surface mounting on Televisions, Plasma or LCD displays, cabinets, appliances, or speaker grills.

The graphs show an IRFX3 vs previous model IRFXII sensitivity to 850(nm). This is the frequency of background IR noise and the IR interference LCD/Plasma panels output, causing the most disruption to standard IR transmission at 940(nm).

A reduction in sensitivity from 7.5 @ 850(nm) to 0.1 @ 850(nm).



IRFX Receiver NIR response

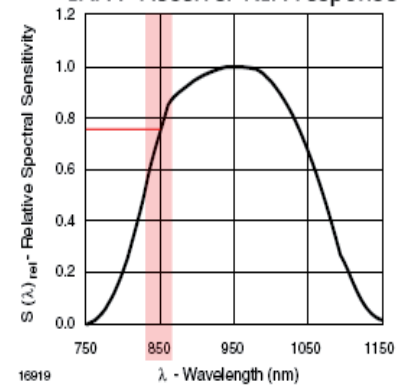


Figure 11. Relative Spectral Sensitivity vs. Wavelength

### Features and Benefits

- o Excellent IR receiver range:  $8m \pm 45^\circ$  (Depends on ambient light levels and remote control strength)
- o Receives / processes very short pulse burst codes systems as used by Foxtel and Sky
- o Wide input voltage range: 8 - 16VDC 50mA
- o Amplifier ON indicator and IR reception "flash back" indicator - both can be defeated.
- o Default modulation frequency, : 38KHz  $\pm$  1%
- o Multiple IRFX3 receivers may be connected in parallel.
- o High Strength Acrylic sticky mounts are used to attach the IRFX3.
- o The receiver has excellent off axis reception, giving  $>50\%$  range when  $45^\circ$  off axis.
- o Enhanced EMI immunity with Data Stream Filtering - rejects IR disturbances that can slow down or cause intermittent problems on IR systems.
- o Flat 4 core 28AWG 2m black lead.
- o Supplied with 3 shell colours: Black, White, & Silver.
- o Rear or side cable exit.
- o Dimensions: Width 9.0mm  
Length 22.0mm  
Height 6.5mm
- o Approvals: C-Tick CISPR22, FCC